

# NOBILIS

P A R I S

September 2019 Collections



# CAMPO

Atelier Saint Germain

The Atelier Saint-Germain range is bringing a new linen look quality, for both upholstery and curtains. The crossing of two-coloured, slightly shredded and irregular threads creates the Nordic-inspired colour palette.

With its Fibre Guard, the Campo fabric is easy to clean and created for both contract or residential use.

Available in 35 colourways

Upholstery use (Martindale 40 000) and curtains

Composition: 64% Ac - 17% Pe - 15% Vi - 4% Li

Width: 138 cm



Seats Fabric: Campo 10803.49 \ Cushions Fabric: Campo 10803.04 \ Wallcovering: Cabestan MT550 \ Rug: Abaca Uni TAP1173.03





## LIN MAXIMO

---

Previously with our Lin Fiona, Nobilis began the development of a modern range of linen. The Lin Maximo has a wide range of colours, offering a matt texture and a stunning density (750g/m2).

Natural and raw colours are mixed with deep urban colours. The Lin Maximo is developed with a real respect for the environment: Oeko Tex and Masters of Linen certified.

Available in 25 colourways

Upholstery use and curtains (Martindale 30 000)

Composition: 100% Linen

Width: 137 cm







# VELOURS MILO

Atelier Saint Germain

Nobilis is bringing a new plain velvet to its collections. Embossed with a subtle grain, the 28 colourways are enhanced with a slight relief, catching the light, perfectly suitable for both contemporary and traditional interiors.

With its Fibre Guard, Velours Milo is easy to clean and created for both contract and residential use.

Available in 28 colourways

Upholstery use and curtains (Martindale 30 000)

Composition: 100% Pe

Width: 140 cm







## BJORN - FJORD

---

### Bjorn

The Bjorn - Fjord collection combines two soft and rich chenilles.

The Bjorn fabric has a palette of 32 colours, combining natural, contemporary and deep tones, for seats and curtains.

Available in 32 colourways

Upholstery use and curtains (Martindale 85 000)

Composition: 79% Pe 21% Co

Width: 140 cm







## BJORN - FJORD

### Fjord

A jute weft running through back of the fabric gives Fjord a beautiful relief and a soft thickness. Available in 8 subtle bleached, natural colours, reminiscent of vegetable dyes.

Available in 8 colourways

Upholstery fabric (Martindale 55,000)

Composition: 37% Pe 30% Co 26% Jute 7% Li

Width: 137 cm



All the colors of Fjord fabric

# MIRAGE

Paille / Linum / Filomene / Galuchat



This new collection brings embossed vinyl perfectly imitating natural fibres, subtle fibre weavings, and precious materials such as Raffia or Galuchat. Coming in natural and sophisticated colours, these qualities are usually dedicated to the hotel industry because of the high resistance to abrasion and an excellent light solidity, while being FR.



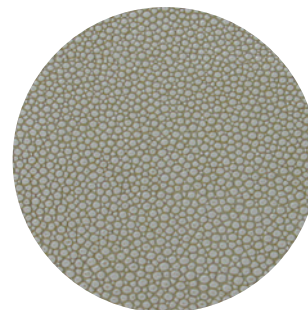
Linum: 6 colourways  
Upholstery use (Martindale 100 000)  
Composition: Face 100% PU / Backing 67% PE 33% Co  
Width: 140 cm



Paille: 9 colourways,  
Upholstery use (Martindale 50 000)  
Composition: 68% PVC 32% Cotton  
Width: 137 cm



Filomene: 10 colourways  
Upholstery use (Martindale 100 000)  
Composition: Face 100% Vinyl / Backing 100% Pe  
Width: 140 cm  
Suitable for Outdoor use.



Galuchat: 10 colourways  
Upholstery use (Martindale 35,000)  
Composition: 73% PVC 25% CO 2% PU  
Width: 150 cm





# ARCHIPELAGO

## Galapagos

ARCHIPELAGO is a charming collection of precious textures and Japanese inspired patterns. Mother of pearl, glazed, crackled, coconut fibres, abaca and raffia weavings, prints on laid yarn... The traditional know-how and experimental research together create exceptional products.

The weaving of painted coconut bark and abaca gives to Galapagos a "beach hut" spirit.

Wallcovering, non -woven backing

Available in 4 colourways

Composition: 81% Coco Bark 13% Abaca 6% Nylon

Linear meter x 110 cm







# ARCHIPELAGO

---

## Seychelles

Nobilis adds to its woven mother-of-pearl range on a grander scale. Mother-of-pearl is pasted upon abaca strips and held by transparent woven threads.

Wallcovering, non -woven backing

Available in 3 colourways

Composition: 49% Abaca 41% Mother of Pearl 8% Pe 2% Nylon

Linear metre x 110 cm







# ARCHIPELAGO

## Sagano

A large-scale bamboo plantation design made of cotton and raffia. Sagano comes in 3 natural colourways and 3 precious and Japanese-inspired tones.

Wallcovering, non-woven backing

Available in 6 colourways

Composition: 40% Cotton 40% Viscose 20% Pe

Linear Metre x 144 cm – Height repeat: 125,5 cm







# ARCHIPELAGO

## Hokkaido

Hokkaido is a large abstract cracked pattern, reminiscent of the technique Raku; a Japanese form of enamelling which creates cracks and irregularities on ceramics.

The printing of this motif, made in the frame on a weaving of yarns, gives Hokkaido an amazing and innovative look.

Wallcovering, non -woven backing

Available in 2 colourways

Composition: 61% Cotton 36% Pe 3% Other Fibres

Linear Metre x 127 cm – height repeat: 75 cm







# ARCHIPELAGO

## Atollo

Atollo is a jacquard design upon Raphia with a subtle shimmering patina.

Wallcovering, non-woven backing

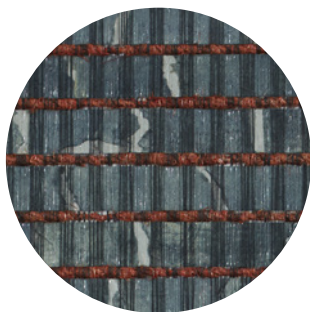
Available in 4 colourways

Composition: 42% Viscose 36% Polyamide 14% Polyester 8% Cotton

Linear Metre x 139.5 cm – Height repeat: 78 cm







# ARCHIPELAGO

## Tobago

A woven combination of dyed paper strips with dyed coconut fibre creates an elegant set of contrasting stripes.

Wallcovering, non -woven backing

Available in 4 colourways

Composition: 90% Paper 5% Nylon 4% Coco Barks 1% Polyester

Linear Metre x 110 cm







# ARCHIPELAGO

## Nami

Nami is a representation of a technique known as 'Katagami'. The Japanese inspired pattern is evocative of waves or little mountains. The digital printing on a laid thread, gives a textile touch and a delicate brilliance.

Wallcovering, non -woven backing

Available in 5 colourways

Composition -: 100% Polyester

Linear metre x 100 cm – height repeat 63 cm





Photos : Quentin Ducros  
We would like to thank the Galerie Jasper Maison.

Press Relations - Objectif Presse PR Team  
Odile Servent - Valentine Berreur de Riedmatten  
valentine@objectifpresse.com  
+33 1 53 85 80 02  
objectifpresse.fr

NOBILIS PARIS SHOWROOM  
38, rue Bonaparte  
75006 PARIS  
boutique@nobilis.fr  
+331 43 29 12 71

NOBILIS LE CANNET SHOWROOM  
1390, Avenue du Campon  
Immeuble l'Européen  
06110 LE CANNET  
cannes@nobilis.fr  
+334 93 69 57 43

NOBILIS BRUXELLES SHOWROOM  
Design District  
18 Boulevard de la deuxième  
avenue britannique  
1190 BRUXELLES  
belgique@nobilis.fr  
+322 534 03 03

NOBILIS LONDON SHOWROOM  
G3 Chelsea Harbour  
Design Center  
SW10 OXE LONDON  
nobilis@nobilis-fontan.co.uk  
+44 208 76 70 774

NOBILIS ZURICH SHOWROOM  
Forchstrasse 239  
CH-8004 ZURICH  
info@nobilis.ch  
+4144 242 88 88

NOBILIS MUNICH SHOWROOM  
Gumbelstrasse 2  
MUNICH D-80636  
info@nobilis-fontan.de  
+49891 85058

NOBILIS MADRID SHOWROOM  
C/ VELAZQUEZ,93 1° Dcha  
28006 MADRID  
nobilis@nobilisfontan.com  
+34 91 561 89 80

NOBILIS MILAN SHOWROOM  
5 Largo Treves  
20121 MILAN  
nobilis@nobilis-italia.it  
+3902 290 03435

NOBILIS (AT LE DECOR) MOSCOW  
SHOWROOM  
Mashkova Street , 13  
105062 MOSCOW  
nobilis@le-decor.com

NOBILIS NEW YORK SHOWROOM  
979 Third Avenue Suite 508  
10022 NEW YORK  
jannice.reynolds@nobilis-usa.com  
+1212 980 1177

NOBILIS MEO SHOWROOM  
Business Bay - Iris Bay Tower  
Flr 13- Room 1301- JW Marquis  
DUBAI E.A.U  
nobilis@nobilis.ae  
+9714 422 7338



**NOBILIS**

P A R I S