

# PORTFOLIO

TEXTILE WALLCOVERING



A true homage to textile yarns, Portfolio pays tribute to Omexco's heritage and expertise as a leading editor of textile wallcoverings.

A savoir-faire that requires mastery of the complete creative process, from the careful selection of fibres, the spinning and dyeing of yarns to the realization of the final textile wallcovering, exploring a variety of textures and materials.

Textiles are truly being celebrated as a noble material in this refined and lavish collection that seduces by its sophisticated simplicity and timeless elegance.

A variety of natural yarns have been assembled, whether pure linen, multicoloured silky cotton or viscose. Space-dyed or printed, they are being presented here in a vast array of colours.

A sensory voyage through an ample colour palette ranging from earthy neutrals or refined pastels to intense and profound hues: Amber Reds, Medici and Cerulean Blues, Andover and Jade Greens, Graphite to Mineral Greys, Greiges and Shades of White.



All wallcoverings are ecological, have a good light resistance and obtained the European fire rating B, s1-d0. They are supplied by the metre (width 90 or 91 cm). The printed rayon yarns also have a marine certificate, so they can be used on cruise ships. These textile wallcoverings on a non-woven backing are breathable, which makes them suitable for humid climates or environments. For most items, railroad installation is possible.

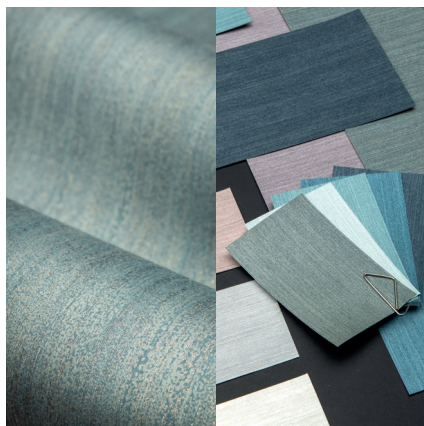
More information and samples are available on request.

Omexco n.v. - Ambachtenlaan 12 - 3001 Heverlee - Belgium  
T. +32 16 40 18 80 - F. +32 16 40 00 17 - [info@omexco.com](mailto:info@omexco.com)

[www.omexco.com](http://www.omexco.com)

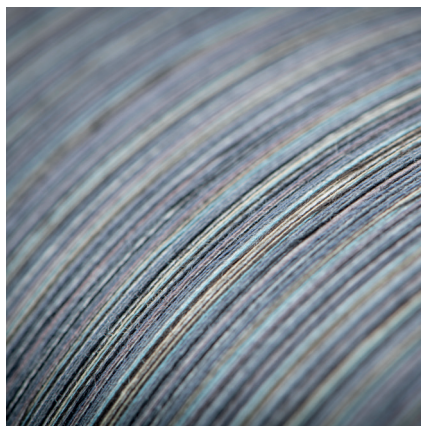
# PORTFOLIO

## TEXTILE WALLCOVERING



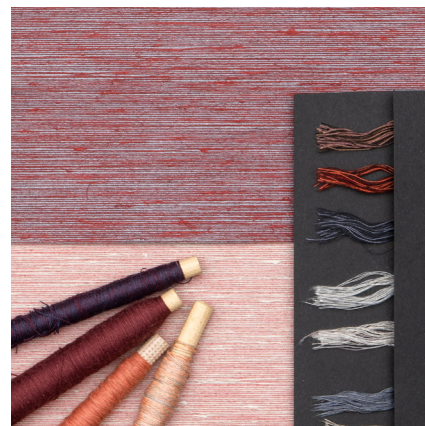
### RAINDROPS AND SEASIDE PRINT

Two designs inspired by the elements of mother nature and its sublime materials. Both are printed on a warp of fine viscose yarns and emphasize the beauty of this textile material. The Raindrop print is enhanced by subtle metallization to evoke sparkling water drops.



### SILKY YARNS

High density warp composed of extremely fine viscose yarns of various colours laminated on non-woven. The richness of this multicoloured material is achieved by combining more than 8 different yarn colours to create a texture full of nuances.



### LINEN YARNS

Luxurious linen yarns, naturally irregular, dyed or coated, then laminated on a coloured background, resulting in an interesting interplay between colour and light for an elegant and timeless effect.



### IKAT YARNS

Warp composed of polychromatic viscose yarns obtained by space dyeing. A technique that involves dyeing a yarn with multiple colours which produces beautiful effects, shading from one colour to another.



### WAVY YARNS

Laminated on non-woven, the warp consists of an assortment of threads spun with different fibres, linen and viscose, resulting in a more capricious yarn. The interaction between the tension and twisting of the different fibres creates a delicate wavy effect for a more organic look and feel.



### LINEN MARQUETRY

A unique re-interpretation of linen, whereby the linen plain is meticulously cut and inlaid by hand in a chevron pattern, thus producing a stunning and exceptional haute couture material.

More information and samples are available on request.

Omexco n.v. - Ambachtenlaan 12 - 3001 Heverlee - Belgium  
T. +32 16 40 18 80 - F. +32 16 40 00 17 - [info@omexco.com](mailto:info@omexco.com)

[www.omexco.com](http://www.omexco.com)